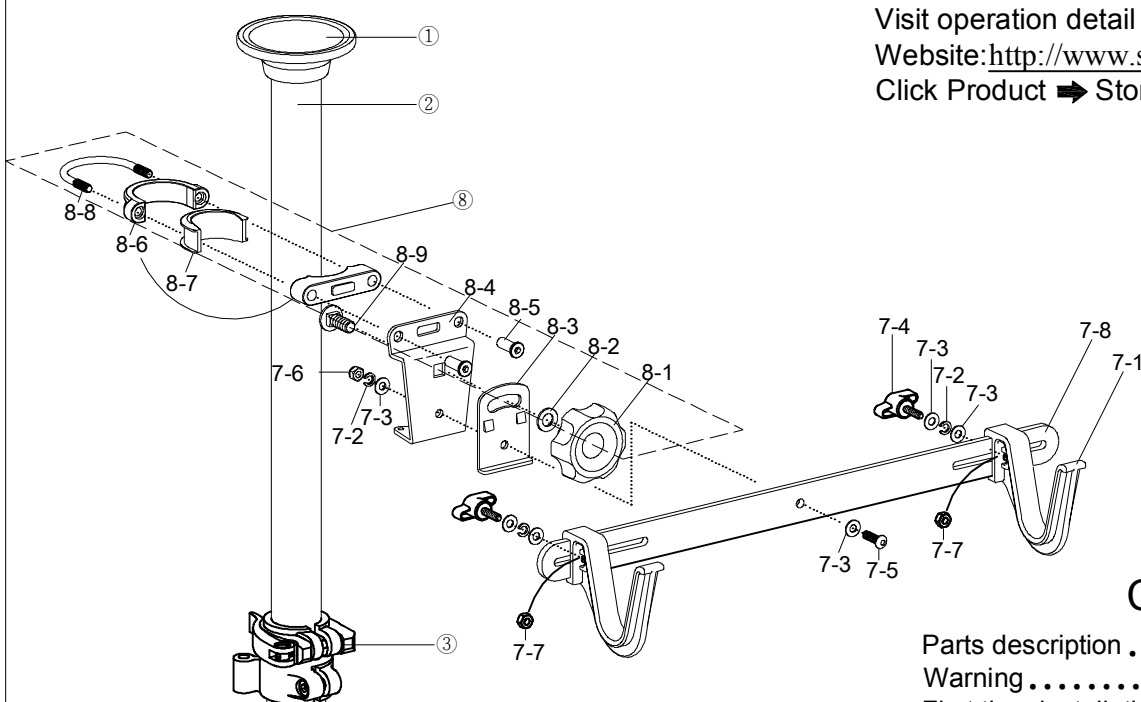


Visit operation detail at Super B

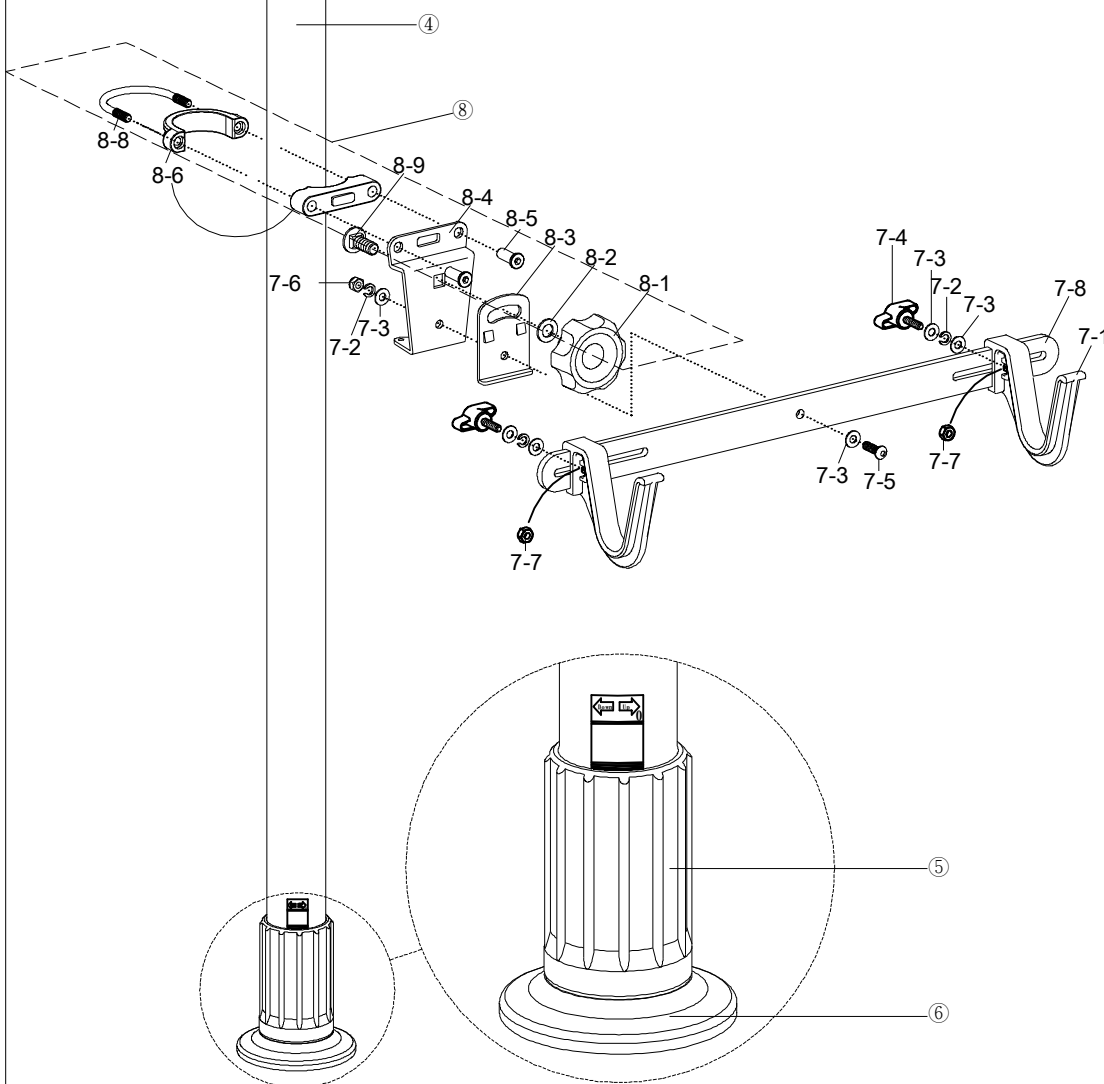
Website: <http://www.superbiketool.com/>,

Click Product ➡ Storage stand ➡ 1. ➡ TB-1965



Contents

Parts description	P.1
Warning	P.2
First time installation	P.3
Hanger unit assembly	P.4



NO	PARTS	Q'TY
①	Rubber top	1
②	Extension tube	1
③	Quick release clamp	1
④	Main tube	1
⑤	Revolver	1
⑥	Ground rubber bottom	1
⑦	Hanger unit	2
7-1	Hanger	4
7-2	Spring washer	6
7-3	Small washer	12
7-4	Turning knob	4
7-5	Bolt	2
7-6	M6 nylon nut	2
7-7	M6 nut	4
7-8	Holding bar	2
⑧	Hanger unit adaptor	
8-1	Adjusting knob	2
8-2	Washer	2
8-3	Balance adjusting unit (S)	2
8-4	Balance adjusting unit (L)	2
8-5	Sex bolt	4
8-6	Plastic pad	2 set
8-7	Spacer	1
8-8	U bolt	2
8-9	Carriage bolt	2



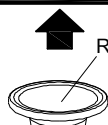
Warning

1. Please follow this instruction to operate the product, or it may cause the collapse of the storage stand, injury and property damage.
2. Please install only on solid and flat floor.
3. The maximum height of the storage stand is up to 320 cm (10ft-6in) . Please make sure the height of ceiling from the floor is available before installation.
4. The maximum weight capacity for the storage stand is 72 kg (158.7 lbs) . The maximum weight capacity for a hanger unit is 18 kg (39.7 lbs) . (Each hanger unit is for one bike only) .
5. The storage stand can be installed up to 4 hanger units as maximum (2 hanger units are included) . The extra 2 hanger units must be installed at the back of installed hanger units.
6. Please don't bump into the storage stand, or recheck the stability by following the instruction for the safety if accidental collision happens.
7. Please check the stability of storage stand regularly. First of all, take the bikes off from the storage stand. Slightly shake the storage stand to ensure the stability of all parts.
If there is any loosening part after shaking, please reinstall and tighten the parts and recheck until they are all firmly fixed.

LIMITATION OF LIABILITY

None of manufacturer, distributor, and retailer shall be held liability for any claim of personal injury or property damage as a result of user crash, abuse, improper installation, overloading, product modification or poor quality of installation places.

Solid Area



Rubber top ① slightly touches the ceiling

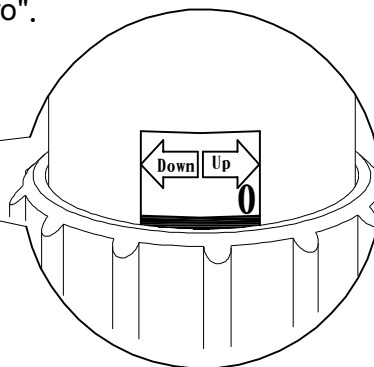
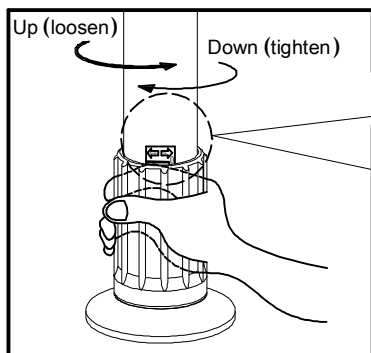


Install storage stand against solid ceiling construction



Ensure the revolver ⑤ is turned to "zero" (↺ up ↻)

1. Ensure revolver ⑤ is turned to "zero".



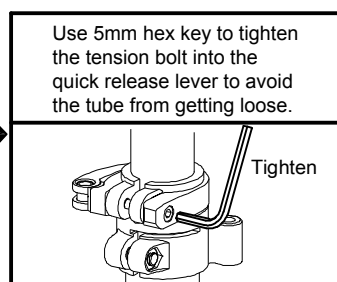
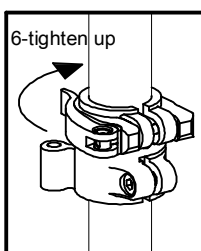
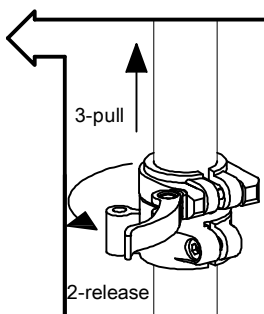
2. Release quick release clamp ③.

3. Extend extension tube ②.

4. Get rubber top ① slightly touched the ceiling.

5. Make sure the storage stand to be vertical with ceiling and floor.

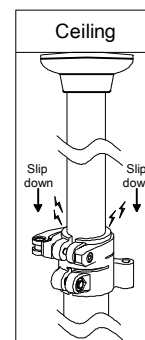
6. Tighten the quick release clamp ③.



Use 5mm hex key to tighten the tension bolt into the quick release lever to avoid the tube from getting loose.

Tighten

Recommended Torque
3.6Nm(31.8in-lbs)

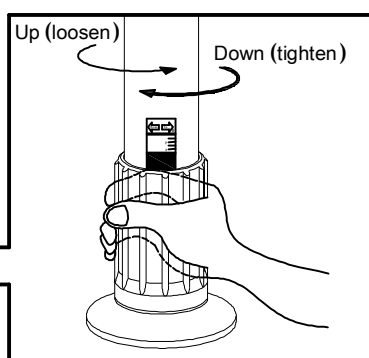


Hold the main tube ④ by hand to keep it steady



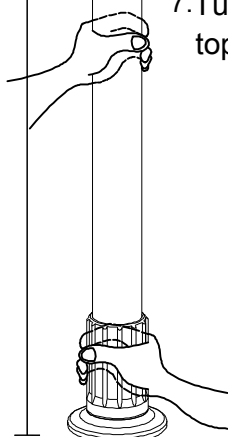
If the tension bolt has not be tightened up , the extension tube ② may slip down while adjusting the revolver ⑤. It will not be able to fix the stand but causes the danger of collapse.

7. Turn the revolver ⑤ clockwise to make sure the top of storage stand is fixed against the ceiling.

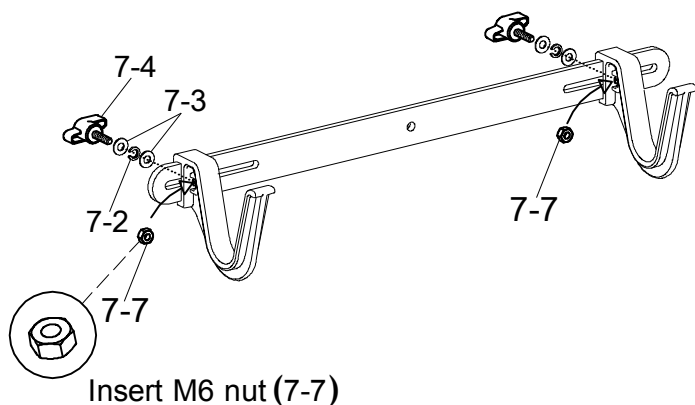


Check the stability of the storage stand after it has been tightened with ceiling. Suggest to turn to the red area

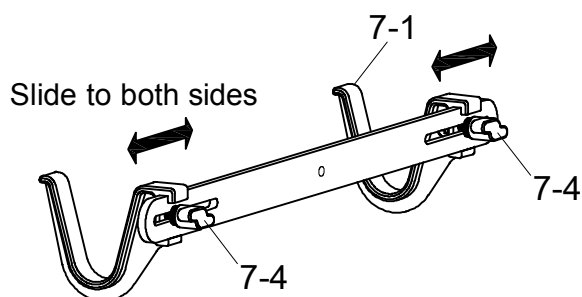
Max.
320 cm



1 Hanger assembly



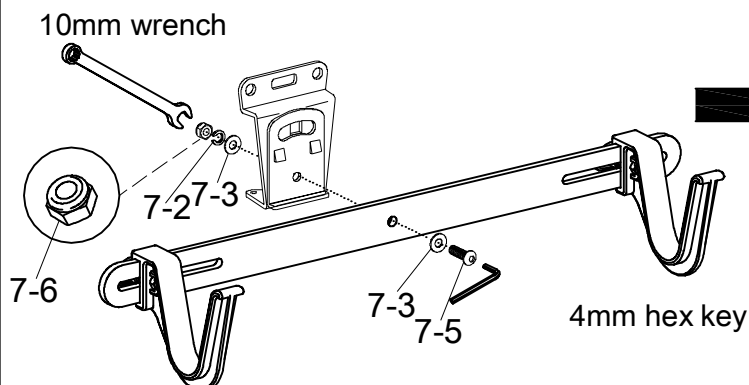
Insert M6 nut (7-7)



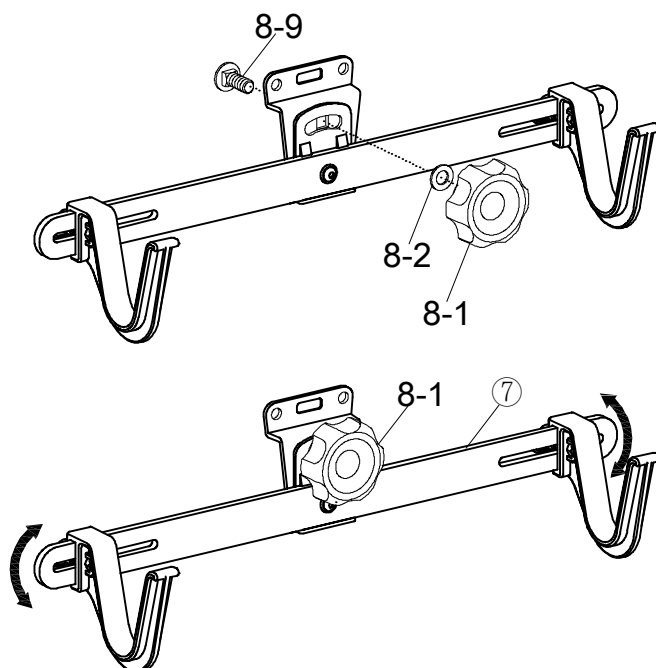
Slide to both sides

Adjust the hanger (7-1) to your needed position and then tighten the turning knob (7-4)

2 Assembly of the hanger unit and hanger unit adaptor



Use 10mm wrench to fasten M6 nylon nut (7-6)
Then use 4mm hex key to tighten the bolt (7-5)

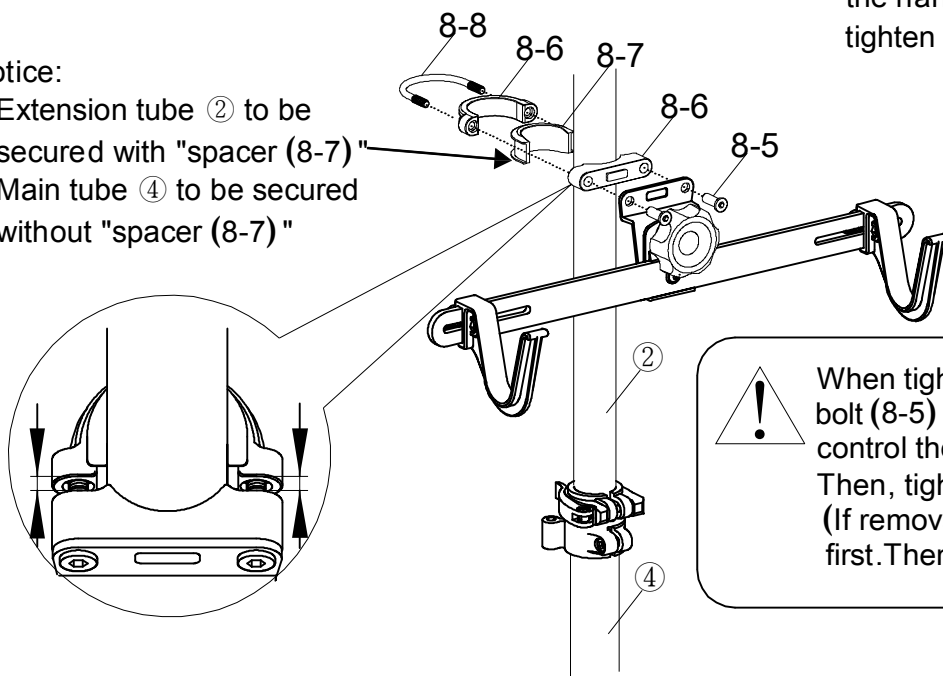


Turn the adjusting knob (8-1) to adjust the hanger unit ⑦ angle and then tighten the adjusting knob (8-1)

3 Assembly of the hanger unit and main/extension tube

Notice:

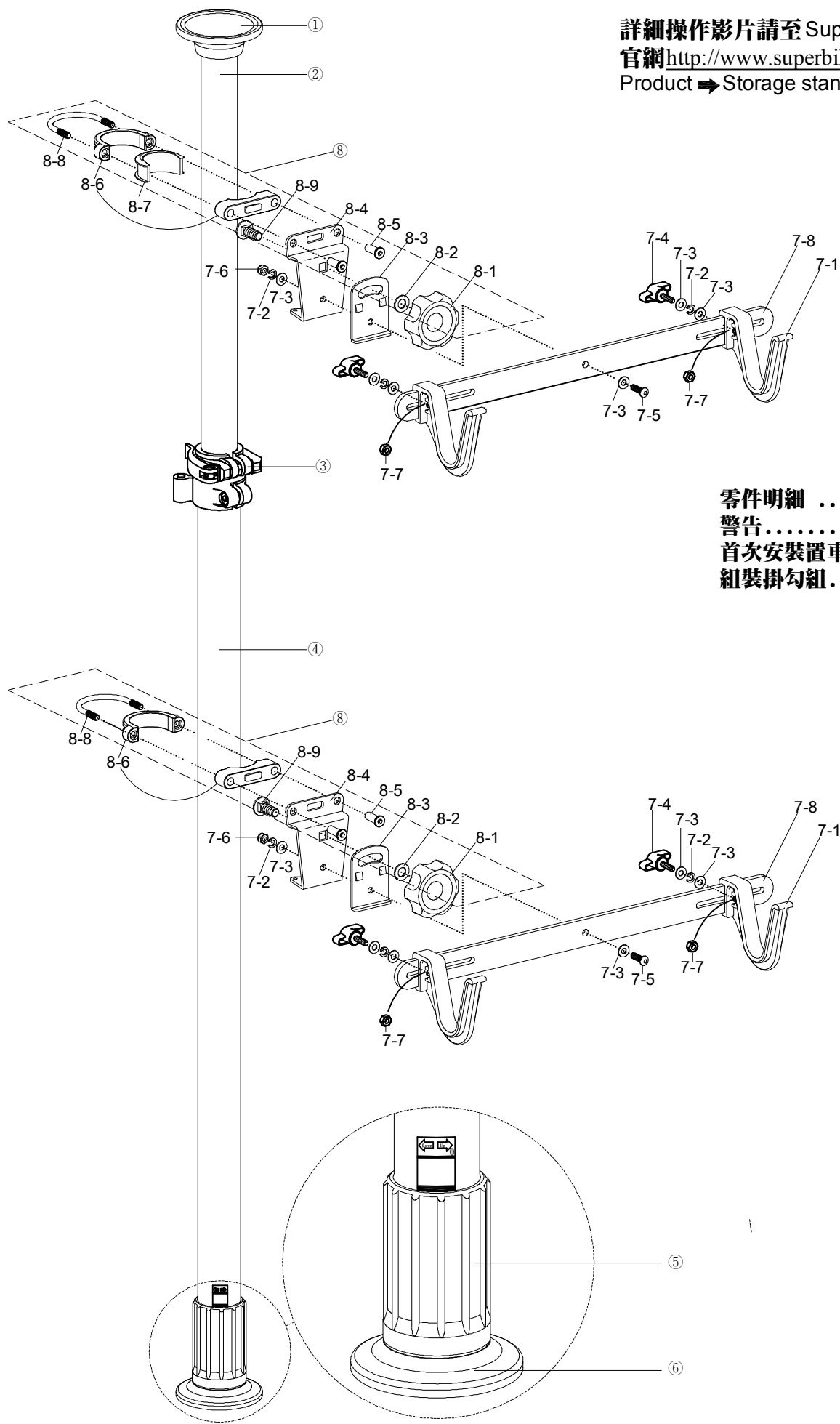
1. Extension tube ② to be secured with "spacer (8-7)"
2. Main tube ④ to be secured without "spacer (8-7)"



When tightening (loosening) the sex bolt (8-5), exert evenly fastening and control the same reach for both sides. Then, tighten two sex bolts (8-5). (If removal is needed, loosen the nuts first. Then, tighten them after adjustment)

詳細操作影片請至 Super B

官網<http://www.superbiketool.com/>觀看，點擊
Product ➡ Storage stand ➡ 1. ➡ TB-1965



目次

零件明細	P.1
警告	P.2
首次安置車架	P.3
組裝掛勾組	P.4

編號	名稱	數量
①	橡膠上墊	1
②	延長管	1
③	快拆座	1
④	主體管	1
⑤	花筒	1
⑥	地面橡膠下墊	1
⑦	掛勾組	2
7-1	掛勾	4
7-2	彈簧華司	6
7-3	小華司	12
7-4	一字旋鈕	4
7-5	半丸頭螺絲	2
7-6	尼龍螺母M6	2
7-7	螺母M6	4
7-8	橫桿	2
⑧	掛勾組調整器	
8-1	大旋鈕	2
8-2	大華司	2
8-3	小固定座	2
8-4	大固定座	2
8-5	長頸螺帽	4
8-6	迫緊塑膠件	2組
8-7	管墊環	1
8-8	U型螺栓	2
8-9	馬車螺絲	2



警告

1. 請依照說明書進行產品操作，否則可能會導致置車架及自行車倒塌，造成受傷或者財物受損。
2. 請務必安裝置車架在穩固且平坦的地面上。
3. 此置車架最高可延伸至320公分(10英尺-6英寸)，安裝前請先確認安裝地點的地面至天花板的高度是否適用。
4. 此置車架最大總承受重量為72公斤(158.7磅)。每一掛勾組最大承受重量為18公斤(39.7磅)。(僅可掛一輛自行車)
5. 此置車架可安裝至四個掛勾組(內含兩組)，另外購買的兩個掛勾組須被安裝在原掛勾組的背面。
6. 切勿碰撞到已安裝好的置車架；若意外碰撞到了置車架，務必確實依照說明書重新檢查，以確保其安全性。
7. 請務必進行定期的置車架穩固檢查：
先將置車架上的自行車取下後，輕搖置車架，確認所有部位皆無鬆動，以確保其穩固性。若是置車架鬆脫，重新調整高度及安裝，再測試一次，直至穩固為止。

責任歸屬

製造商、任意代理商或經銷商，對於因消費者之碰撞、濫用、不當安裝、超過負載、變造產品或不適當的安裝場所而導致受傷或財物損失，不負相關責任。

實心區域

橡膠上墊①輕觸天花板

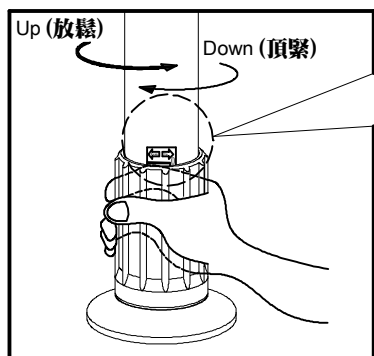


將置車架安裝至牢固的天花板



務必確認花筒⑤轉至"歸0線" (↺ up)

1. 確認花筒⑤已調整至"歸0線"



2. 鬆脫快拆座③。

3. 拉出延長管②。

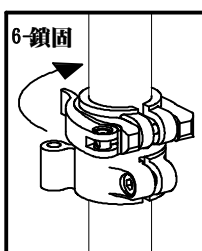
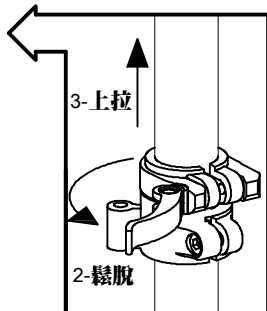
4. 橡膠上墊①"輕觸至天花板"。

5. 務必檢視置車架與地面及天花板互相"垂直"。

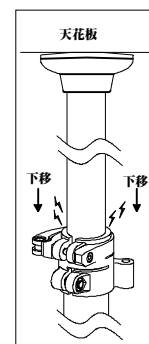
6. 鎖固快拆座③。

最高
320公分

手固定主體管④ 不轉動

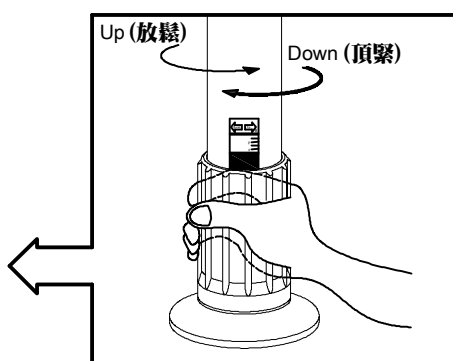


建議扭力強度
3.6Nm (31.8in-lbs)



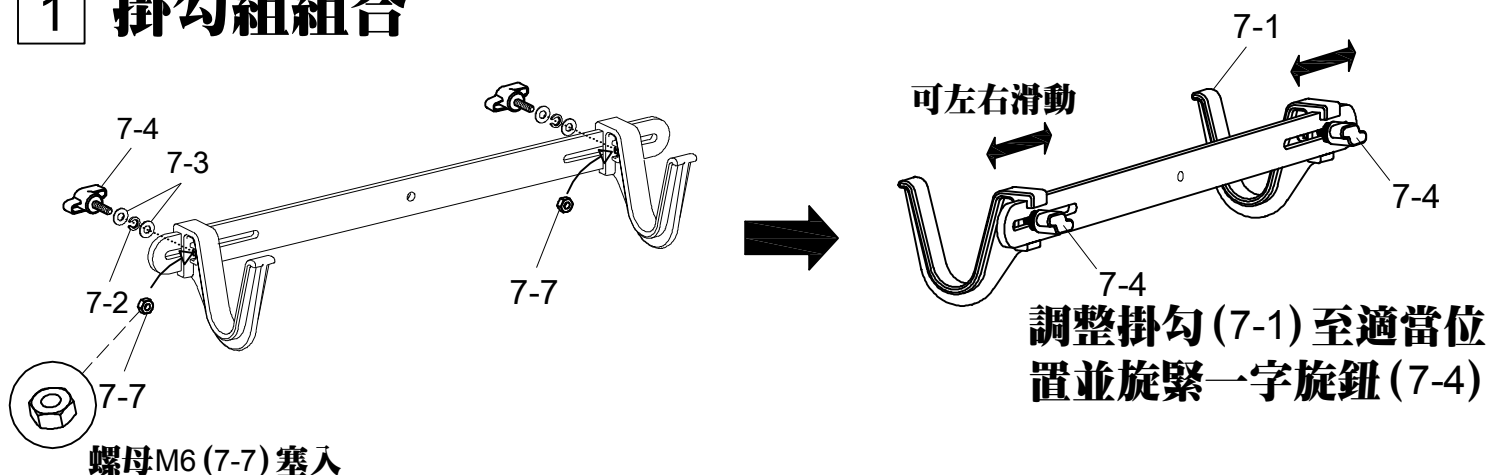
⚠ 注意：
迫緊螺絲如未鎖緊，調整花筒⑤時，會產生延長管②下移(有異音)，導致無法牢固的固定置車架，會造成倒塌危險。

7. 旋轉花筒⑤ (Down)，將置車架頂緊天花板並穩固的鎖定住

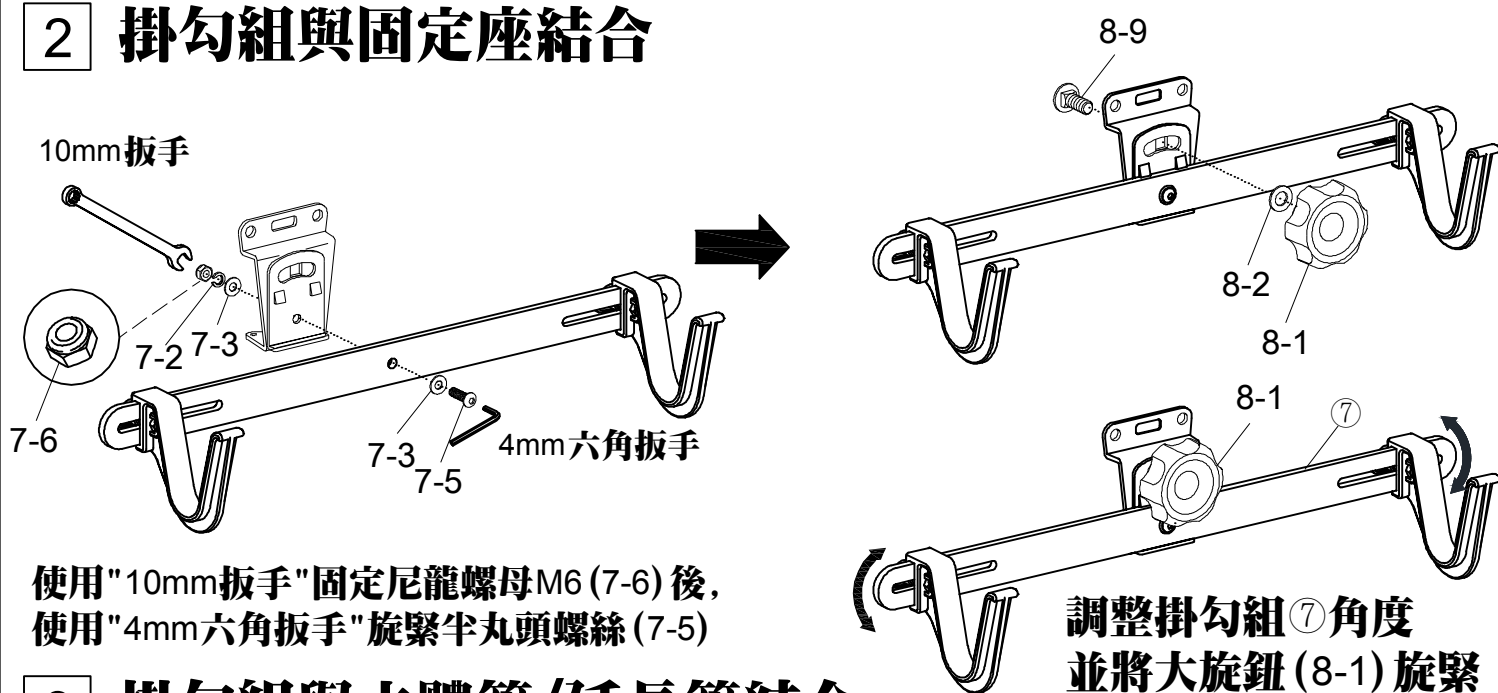


頂緊後，請務必確認是否穩固。建議轉至紅色區域內

1 掛勾組組合



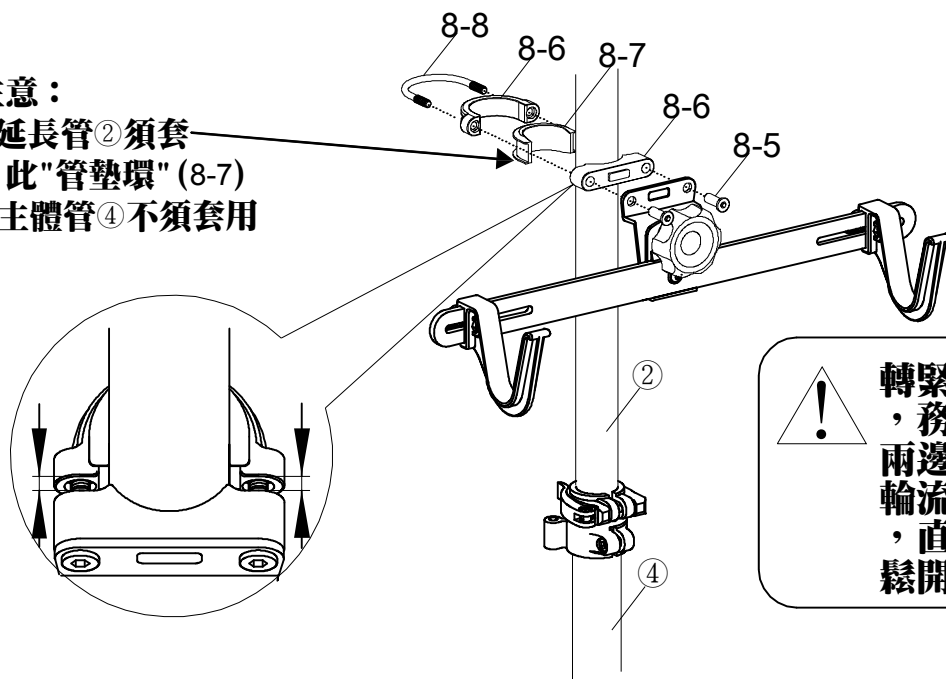
2 掛勾組與固定座結合



3 掛勾組與主體管/延長管結合

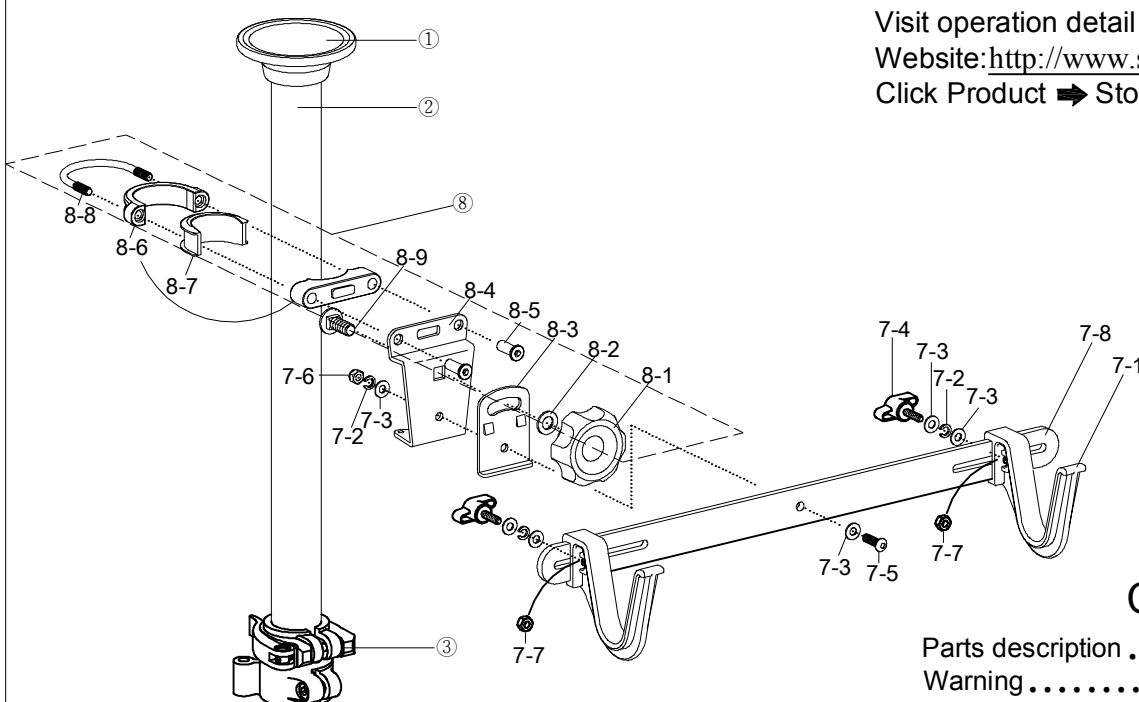
注意：

1. 延長管 ② 須套此"管墊環" (8-7)
2. 主體管 ④ 不須套用



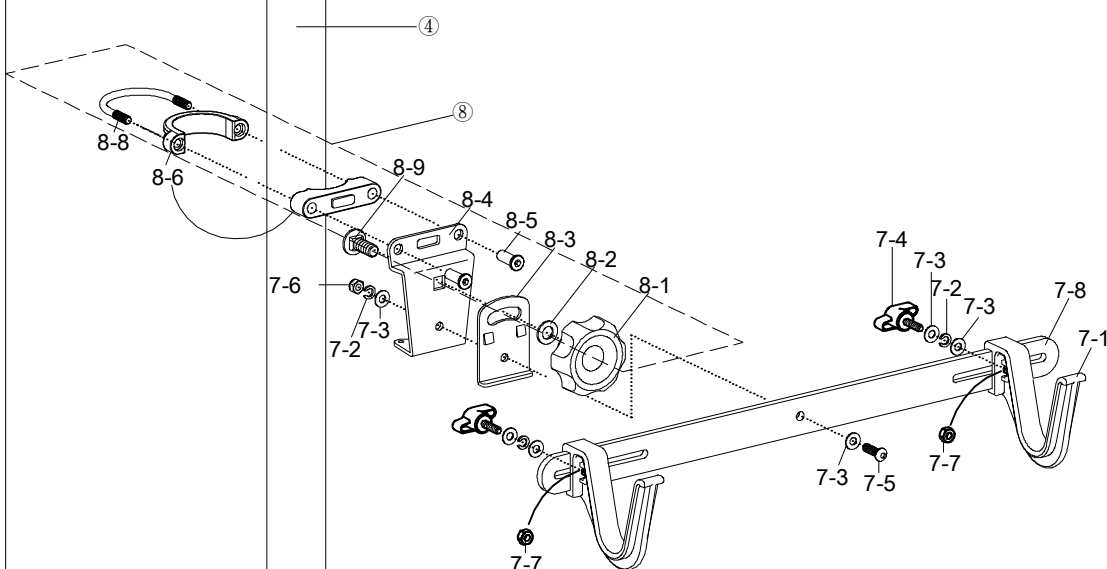
⚠ 轉緊 (放鬆) 長頸螺帽 (8-5) 時，務必平均施力，務必控制兩邊間距一樣 (如左圖示)，輪流轉動2顆長頸螺帽 (8-5)，直至逼緊。(如須移動請鬆開，調整位置後再旋緊)

Visit operation detail at Super B
Website: <http://www.superbiketool.com/>,
Click Product ➡ Storage stands ➡ 1. ➡ TB-1967

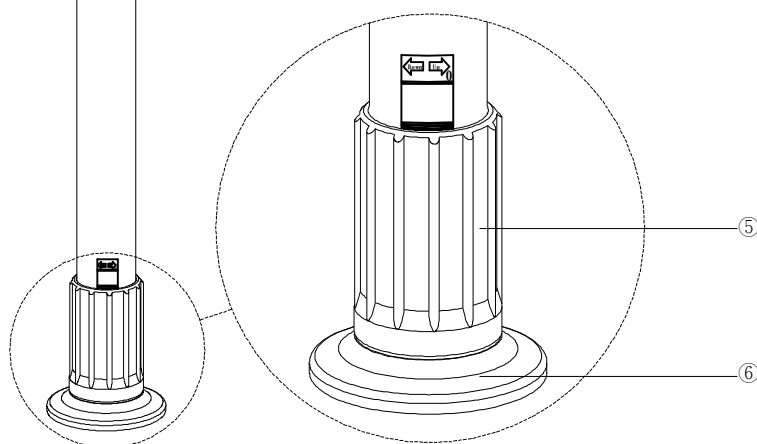


Contents

Parts description	P.1
Warning	P.2
First time installation	P.3
Hanger unit assembly	P.4



NO	PARTS	Q'TY
①	Rubber top	1
②	Extension tube	1
③	Quick release clamp	1
④	Main tube	1
⑤	Revolver	1
⑥	Ground rubber bottom	1
⑦	Hanger unit	2
7-1	Hanger	4
7-2	Spring washer	6
7-3	Small washer	12
7-4	Turning knob	4
7-5	Bolt	2
7-6	M6 nylon nut	2
7-7	M6 nut	4
7-8	Holding bar	2
⑧	Hanger unit adaptor	
8-1	Adjusting knob	2
8-2	Washer	2
8-3	Balance adjusting unit (S)	2
8-4	Balance adjusting unit (L)	2
8-5	Sex bolt	4
8-6	Plastic pad	2 set
8-7	Spacer	1
8-8	U bolt	2
8-9	Carriage bolt	2





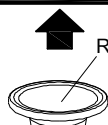
Warning

1. Please follow this instruction to operate the product, or it may cause the collapse of the storage stand, injury and property damage.
2. Please install only on solid and flat floor.
3. The maximum height of the storage stand is up to 350 cm (11ft-6in) . Please make sure the height of ceiling from the floor is available before installation.
4. The maximum weight capacity for the storage stand is 72 kg (158.7 lbs) . The maximum weight capacity for a hanger unit is 18 kg (39.7 lbs) . (Each hanger unit is for one bike only) .
5. The storage stand can be installed up to 4 hanger units as maximum (2 hanger units are included) . The extra 2 hanger units must be installed at the back of installed hanger units.
6. Please don't bump into the storage stand, or recheck the stability by following the instruction for the safety if accidental collision happens.
7. Please check the stability of storage stand regularly. First of all, take the bikes off from the storage stand. Slightly shake the storage stand to ensure the stability of all parts.
If there is any loosening part after shaking, please reinstall and tighten the parts and recheck until they are all firmly fixed.

LIMITATION OF LIABILITY

None of manufacturer, distributor, and retailer shall be held liability for any claim of personal injury or property damage as a result of user crash, abuse, improper installation, overloading, product modification or poor quality of installation places.

Solid Area



Rubber top ① slightly touches the ceiling

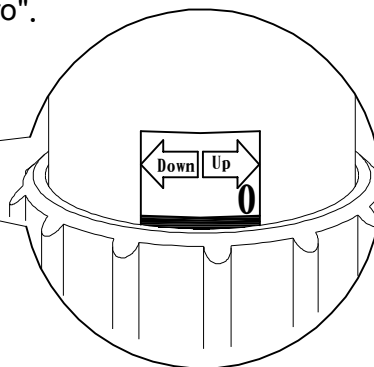
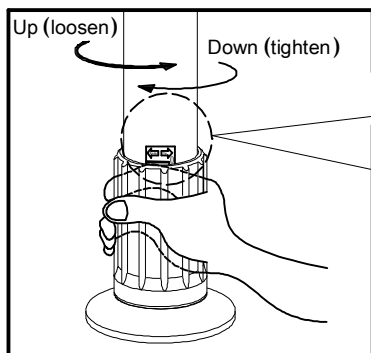


Install storage stand against solid ceiling construction



Ensure the revolver ⑤ is turned to "zero" (↺ up ↻)

1. Ensure revolver ⑤ is turned to "zero".



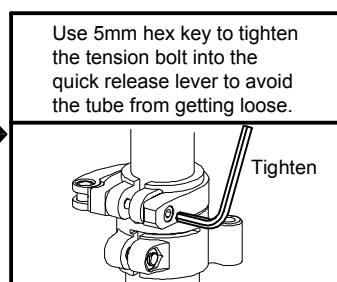
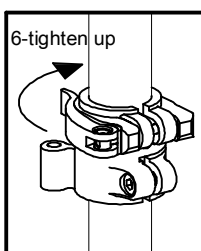
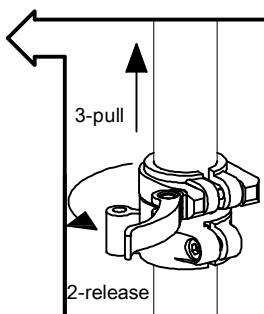
2. Release quick release clamp ③.

3. Extend extension tube ②.

4. Get rubber top ① slightly touched the ceiling.

5. Make sure the storage stand to be vertical with ceiling and floor.

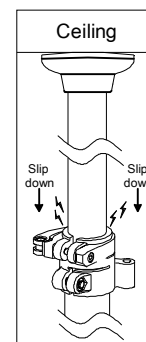
6. Tighten the quick release clamp ③.



Use 5mm hex key to tighten the tension bolt into the quick release lever to avoid the tube from getting loose.

Tighten

Recommended Torque
3.6Nm(31.8in-lbs)

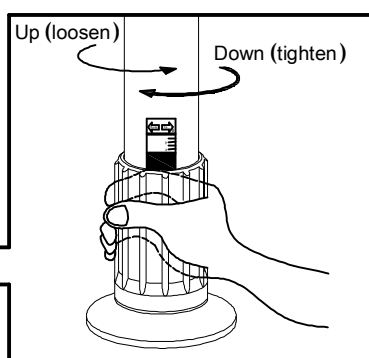


Hold the main tube ④ by hand to keep it steady



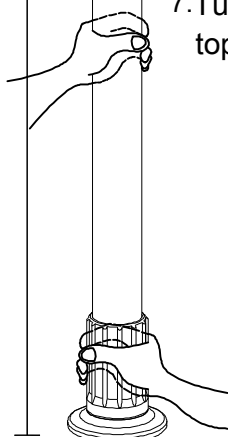
If the tension bolt has not be tightened up , the extension tube ② may slip down while adjusting the revolver ⑤. It will not be able to fix the stand but causes the danger of collapse.

7. Turn the revolver ⑤ clockwise to make sure the top of storage stand is fixed against the ceiling.

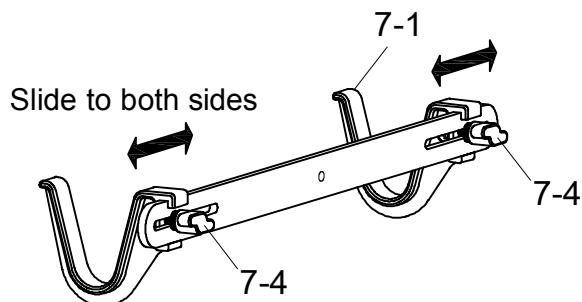
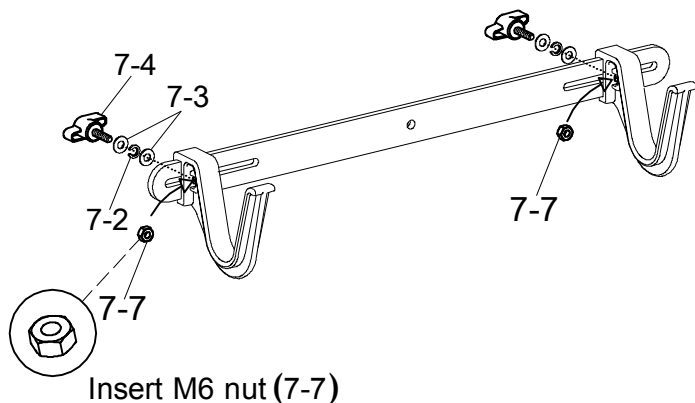


Check the stability of the storage stand after it has been tightened with ceiling. Suggest to turn to the red area

Max.
350 cm

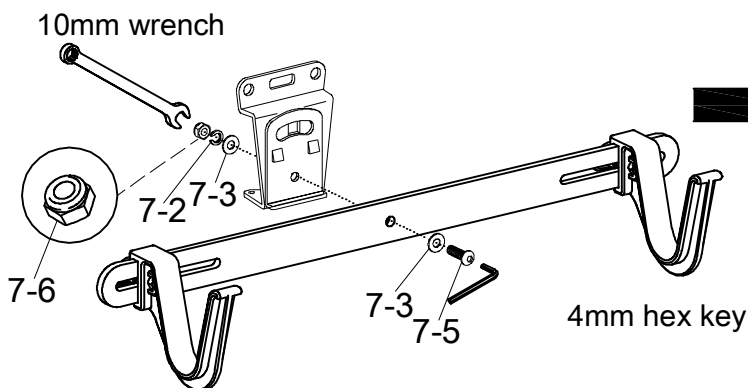


1 Hanger assembly

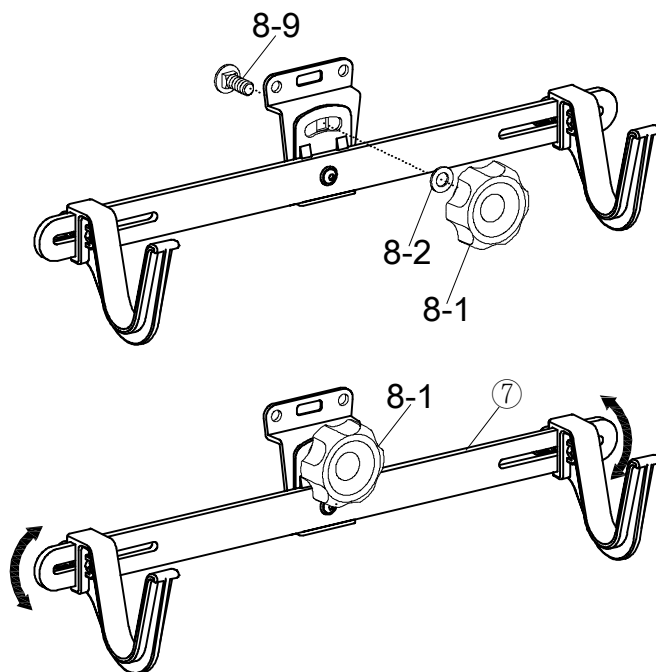


Adjust the hanger (7-1) to your needed position and then tighten the turning knob (7-4)

2 Assembly of the hanger unit and hanger unit adaptor



Use 10mm wrench to fasten M6 nylon nut (7-6)
Then use 4mm hex key to tighten the bolt (7-5)

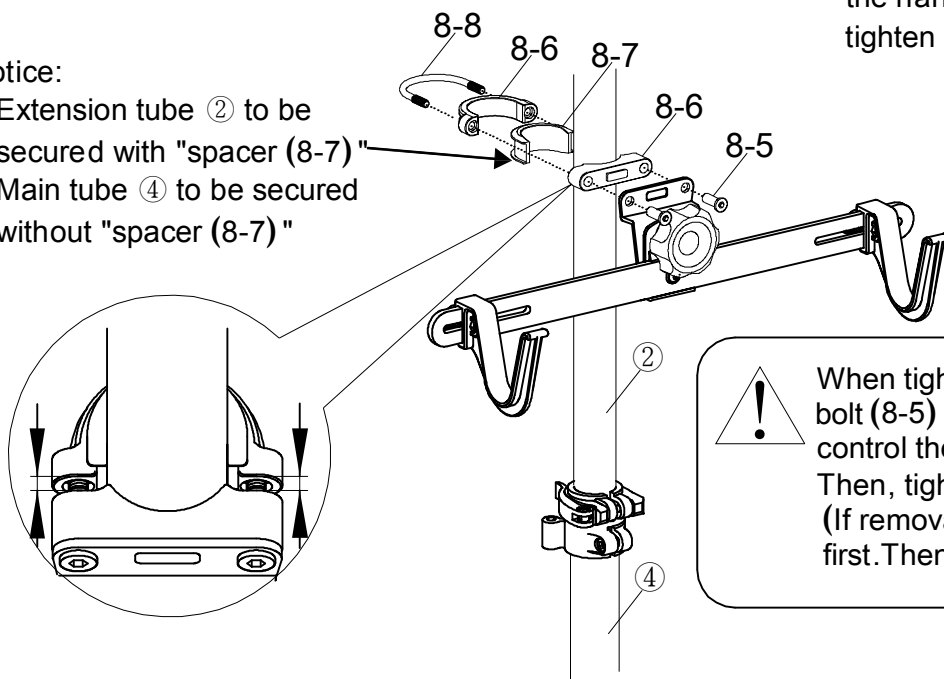


Turn the adjusting knob (8-1) to adjust the hanger unit ⑦ angle and then tighten the adjusting knob (8-1)

3 Assembly of the hanger unit and main/extension tube

Notice:

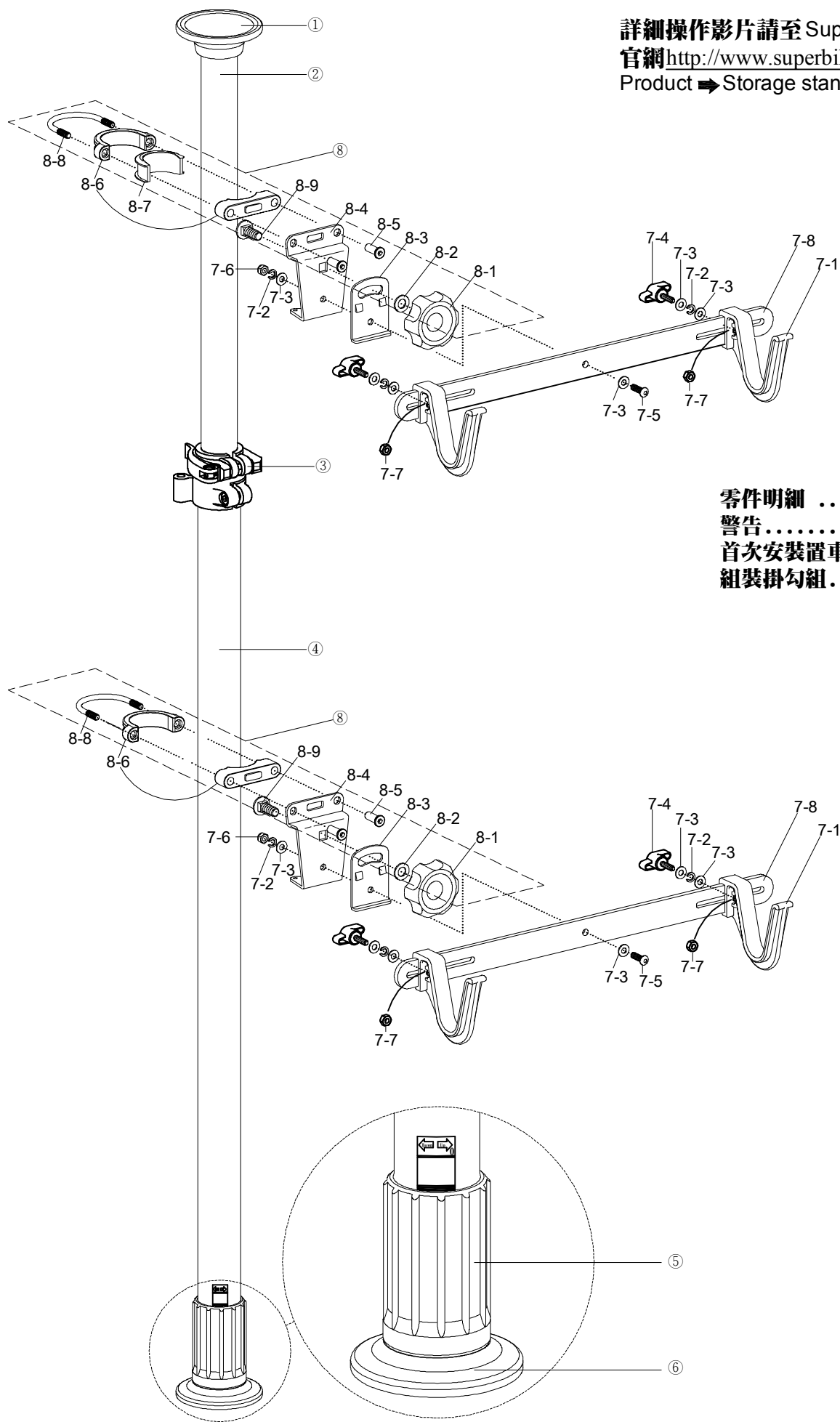
1. Extension tube ② to be secured with "spacer (8-7)"
2. Main tube ④ to be secured without "spacer (8-7)"



When tightening (loosening) the sex bolt (8-5), exert evenly fastening and control the same reach for both sides. Then, tighten two sex bolts (8-5). (If removal is needed, loosen the nuts first. Then, tighten them after adjustment)

詳細操作影片請至 Super B

官網<http://www.superbiketool.com/>觀看，點擊
Product ➡ Storage stands ➡ 1. ➡ TB-1967



目次

零件明細	P.1
警告	P.2
首次安置車架	P.3
組裝掛勾組	P.4

編號	名稱	數量
①	橡膠上墊	1
②	延長管	1
③	快拆座	1
④	主體管	1
⑤	花筒	1
⑥	地面橡膠下墊	1
⑦	掛勾組	2
7-1	掛勾	4
7-2	彈簧華司	6
7-3	小華司	12
7-4	一字旋鈕	4
7-5	半丸頭螺絲	2
7-6	尼龍螺母M6	2
7-7	螺母M6	4
7-8	橫桿	2
⑧	掛勾組調整器	
8-1	大旋鈕	2
8-2	大華司	2
8-3	小固定座	2
8-4	大固定座	2
8-5	長頸螺帽	4
8-6	迫緊塑膠件	2組
8-7	管墊環	1
8-8	U型螺栓	2
8-9	馬車螺絲	2



警告

1. 請依照說明書進行產品操作，否則可能會導致置車架及自行車倒塌，造成受傷或者財物受損。
2. 請務必安裝置車架在穩固且平坦的地面上。
3. 此置車架最高可延伸至350公分(11英尺-6英寸)，安裝前請先確認安裝地點的地面至天花板的高度是否適用。
4. 此置車架最大總承受重量為72公斤(158.7磅)。每一掛勾組最大承受重量為18公斤(39.7磅)。(僅可掛一輛自行車)
5. 此置車架可安裝至四個掛勾組(內含兩組)，另外購買的兩個掛勾組須被安裝在原掛勾組的背面。
6. 切勿碰撞到已安裝好的置車架；若意外碰撞到了置車架，務必確實依照說明書重新檢查，以確保其安全性。
7. 請務必進行定期的置車架穩固檢查：
先將置車架上的自行車取下後，輕搖置車架，確認所有部位皆無鬆動，以確保其穩固性。若是置車架鬆脫，重新調整高度及安裝，再測試一次，直至穩固為止。

責任歸屬

製造商、任意代理商或經銷商，對於因消費者之碰撞、濫用、不當安裝、超過負載、變造產品或不適當的安裝場所而導致受傷或財物損失，不負相關責任。

實心區域

橡膠上墊①輕觸天花板

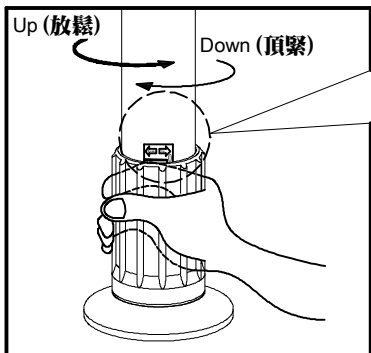


將置車架安裝至牢固的天花板



務必確認花筒⑤轉至"歸0線" (↺ up)

1. 確認花筒⑤已調整至"歸0線"



2. 鬆脫快拆座③。

3. 拉出延長管②。

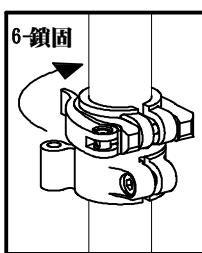
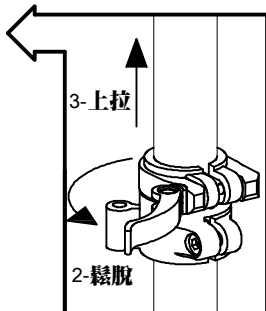
4. 橡膠上墊①"輕觸至天花板"。

5. 務必檢視置車架與地面及天花板互相"垂直"。

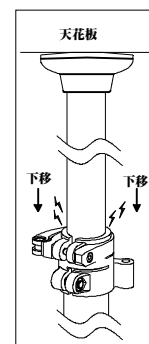
6. 鎖固快拆座③。

最高
350公分

手固定主體管④ 不轉動

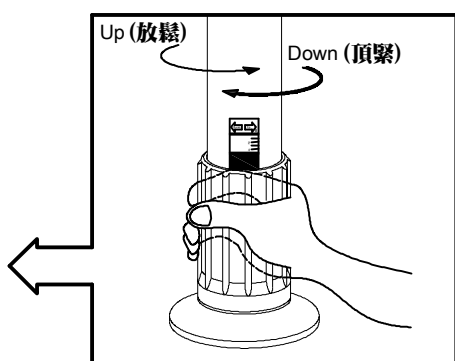


建議扭力強度
3.6Nm (31.8in-lbs)



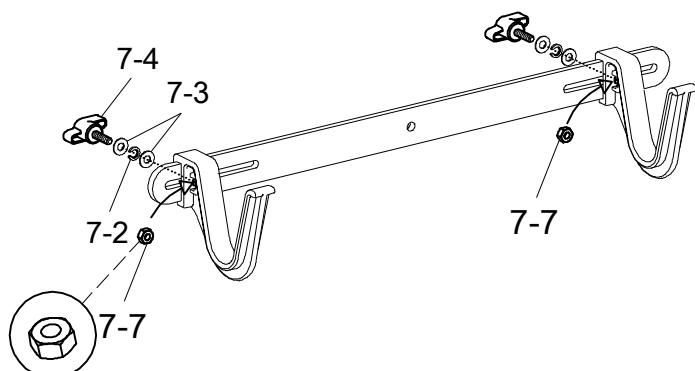
注意：
迫緊螺絲如未鎖緊，調整花筒⑤時，會產生延長管②下移(有異音)，導致無法牢固的固定置車架，會造成倒塌危險。

7. 旋轉花筒⑤ (Down)，將置車架頂緊天花板並穩固的鎖定住

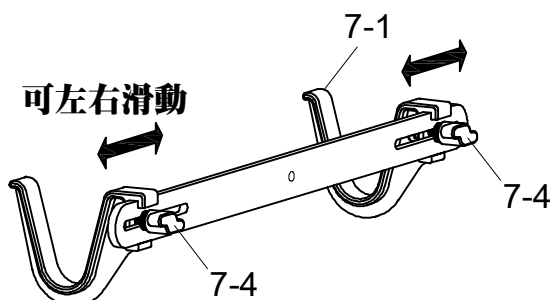


頂緊後，請務必確認是否穩固。建議轉至紅色區域內

1 掛勾組組合

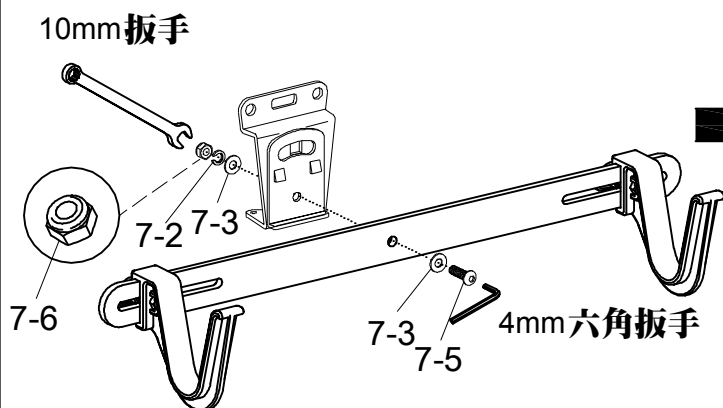


螺母M6 (7-7) 塞入

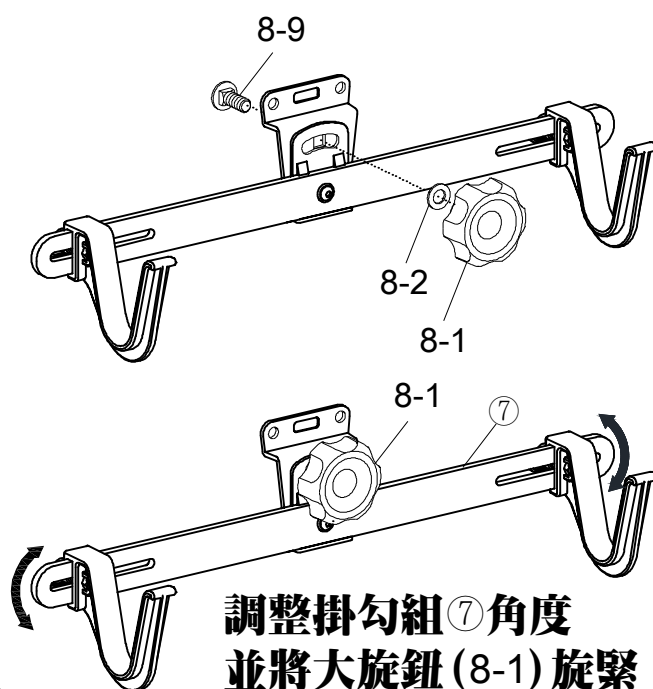


調整掛勾 (7-1) 至適當位置並旋緊一字旋鈕 (7-4)

2 掛勾組與固定座結合



使用"10mm扳手"固定尼龍螺母M6 (7-6) 後，
使用"4mm六角扳手"旋緊半丸頭螺絲 (7-5)

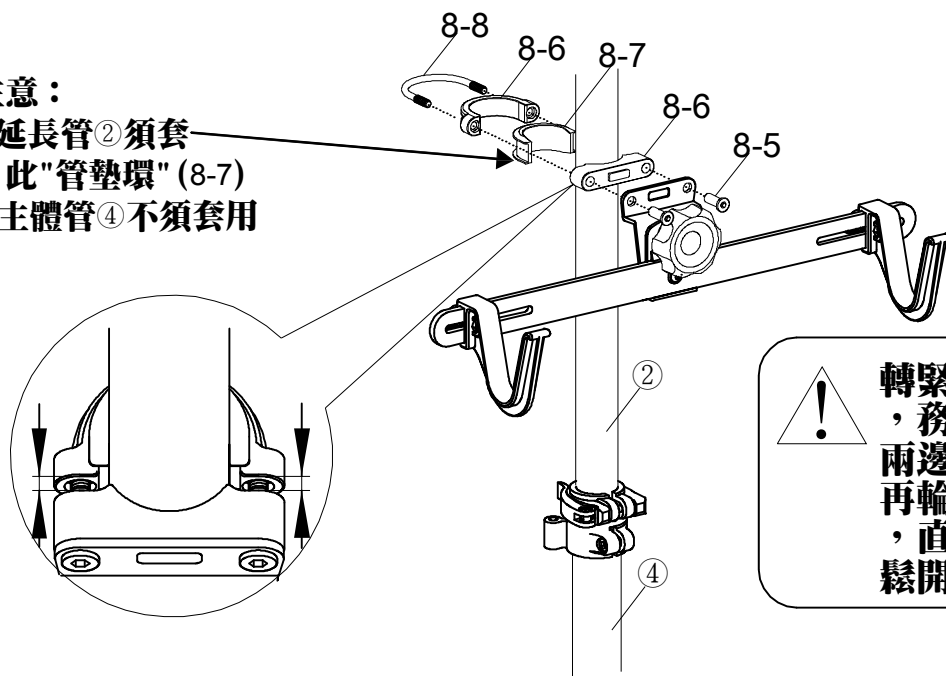


調整掛勾組 ⑦ 角度
並將大旋鈕 (8-1) 旋緊

3 掛勾組與主體管/延長管結合

注意：

1. 延長管 ② 須套此"管墊環" (8-7)
2. 主體管 ④ 不須套用



轉緊 (放鬆) 長頸螺帽 (8-5) 時，務必平均施力，務必控制兩邊間距一樣。
再輪流轉動2顆長頸螺帽 (8-5)，直至逼緊。(如須移動請鬆開，調整位置後再旋緊)