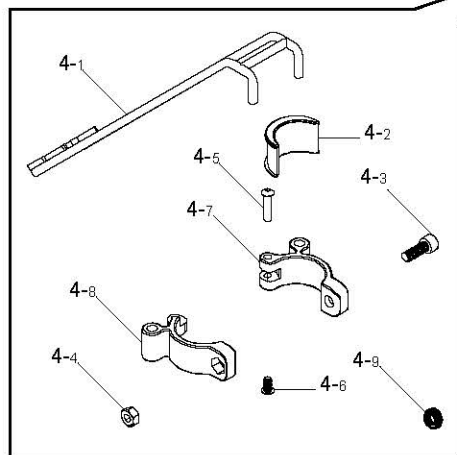


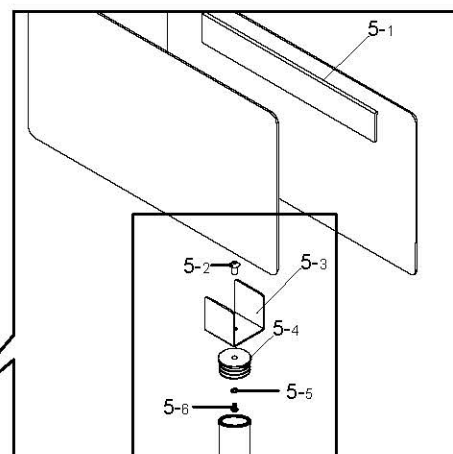
## Contents

Parts description .....P.1  
Assembly .....P.2

### 1 Parts description



4-2~4-9 are packed in a bag  
(6 bags in total)



5-2~5-6 are packed in a bag

NO.	PART	Q'TY
①	Extension tube	1
②	Quick release clamp lever	1
③	Main tube	1
④	Wheelset hanger	6sets
	4-1 Hanger arm	6
	4-2 Spacer	6
	4-3 Screw M8	6
	4-4 Lock nut M8	6
	4-5 Sex bolt	6
	4-6 Mating screw	6
	4-7 Mating clamp	6
	4-8 Flange clamp	6
	4-9 Washer	6
⑤	Billboard set	1set
	5-1 Logo sign	2
	5-2 Mating screw	1
	5-3 Logo seat	1
	5-4 Logo plug	1
	5-5 Spring washer	1
	5-6 Sex bolt	1

### Warning

Please make sure you completely read the instruction before assembly. Place the wheelset hangers in advance to make sure the stability of the wheelset display stand and every single part is assembled properly. The manufacture and distributor would not take any responsibility for the injury caused by assembling without instruction, overloading, modifying the product without authorization, and wrong using or installing in improper places.



Tripod upright must be placed on the flat floor to avoid falling down.

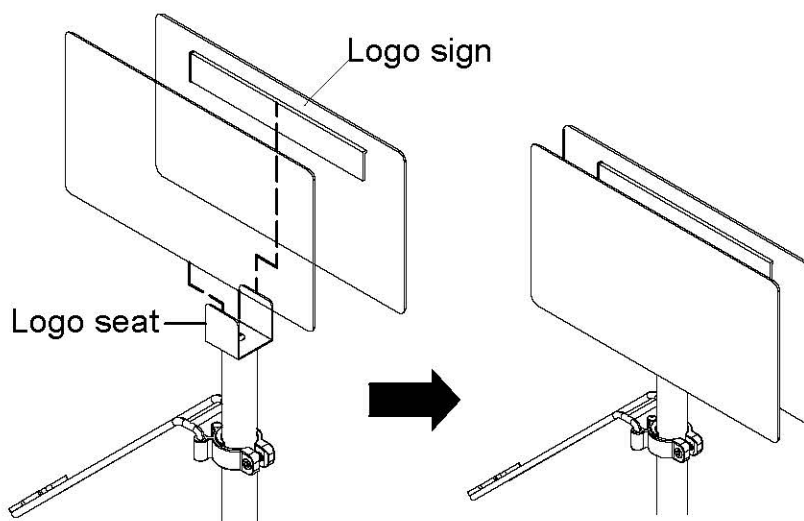
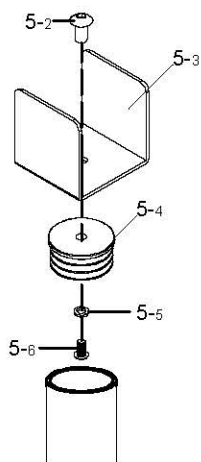


Max load:

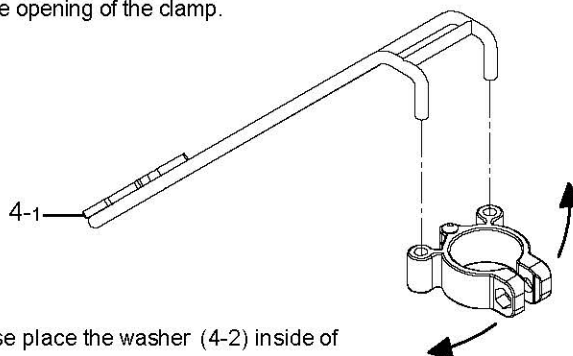
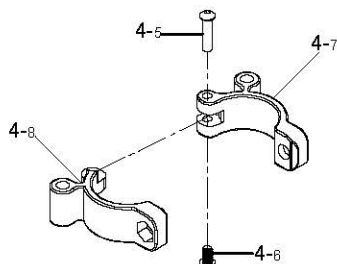
2kg for each wheelset hanger  
40kg for whole wheelset display stand

## 2 Assembly

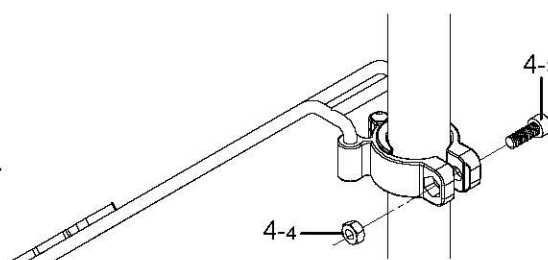
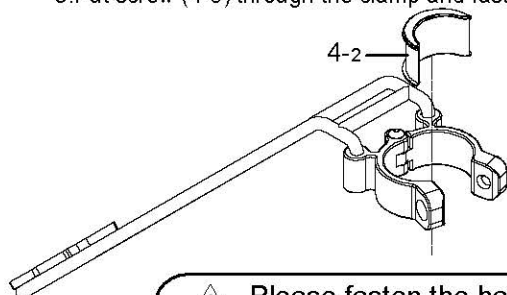
1. Put the sex bolt (5-6) through in the order of spring washer (5-5) 、 logo sign (5-4) 、 logo seat (5-3) and screw in the mating screw (5-2) (Max : 5.0Nm) .
2. Place the logo sign (5-1) onto the logo seat (5-3).



3. Insert flange clamp (4-8) into mating clamp (4-7).
4. Put the mating screw (4-5) through the flange clamp (4-8) and mating clamp (4-7) then fasten into the sex bolt (4-6).
5. Combine the hanger arm (4-1) with the clamp (4-7&4-8) by adjusting the opening of the clamp.



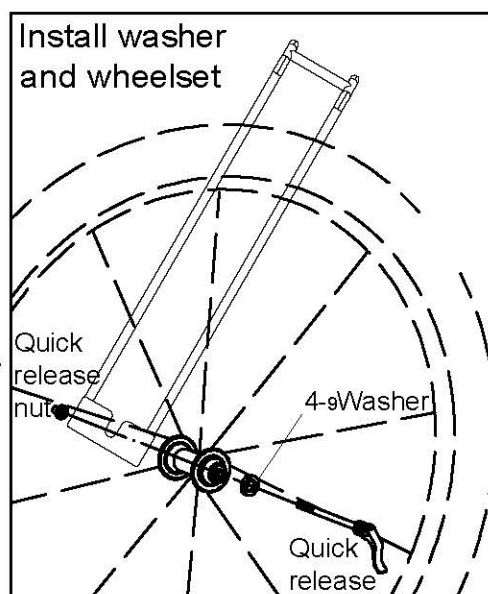
6. Before setting the wheelset hanger ④ onto the extension tube ①, please place the washer (4-2) inside of the clamp (4-7&4-8) then fasten the clamp on the extension tube ①.
7. Before setting the wheelset hanger ④ onto the main tube ③, only need to fasten the clamp (4-7&4-8) on the main tube ③.
8. Adjust the position of wheelset hanger on the extender tube ① or main tube ③ as you needed.
9. Put screw (4-3) through the clamp and fasten on locknut (4-4). (Max : 6.0Nm)



Please fasten the hanger arm (4-1) onto the clamp (4-7&4-8) before fastening the screw (4-3) and lock nut (4-4) into clamp to make sure hanger arm (4-1) and clamp (4-7&4-8) can be assembled.

## 3 Instruction

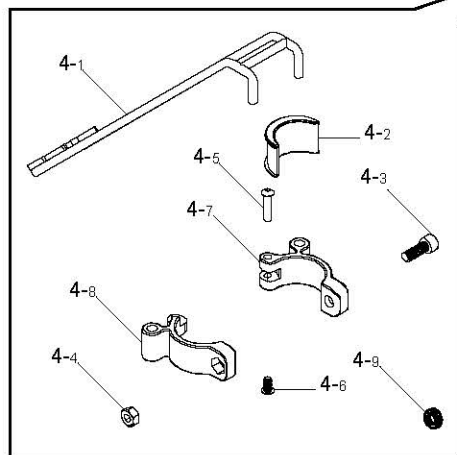
1. Before put onto the wheelset, please make sure the wheelset display stand is placing on the flat floor and the wheelset hangers are firmly fixed on the extender tube ① or main tube ③.
2. Take off the quick release of wheelset.
3. Put the axle quick release through washer (4-9), hub, hanger arm (4-1) and fasten on quick release nut. (clamp the quick release under the instruction of the wheelset)
4. Make sure the wheelsets are firmly fixed on the wheelset hangers ④.



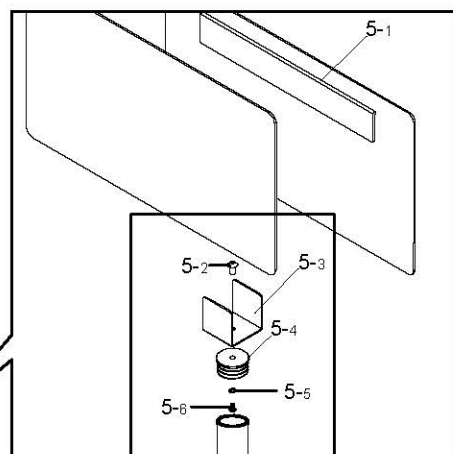
# 目次

零件明細.....	P.1
組裝步驟.....	P.2

## 1 零件明細



4-2~4-9在同一包裝袋裡面,共6袋



5-2~5-6裝在同一袋裡

編號	名稱	數量
①	延長管	1
②	快拆座	1
③	主體管	1
④	輪組固定架組	6組
	4-1 固定臂	6
	4-2 墊片	6
	4-3 六角螺絲M8	6
	4-4 防鬆螺帽M8	6
	4-5 對鎖螺絲(母)	6
	4-6 對鎖螺絲(公)	6
	4-7 雙耳管束(母)	6
	4-8 雙耳管束(公)	6
	4-9 墊圈	6
⑤	標示版組	1組
	5-1 Logo標示版	2
	5-2 對鎖螺絲(公)	1
	5-3 標示版座	1
	5-4 標示版固定座	1
	5-5 彈簧墊片	1
	5-6 對鎖螺絲(母)	1

### 警告

安裝前,請詳讀使用說明書。  
使用展示架前,請掛上輪組,徹底的測試展示架的穩固性,以及確認各部分零件安裝是否正確。若因未安裝妥當、超過負載、私自改造、不當使用或安裝於不適當的場所而造成損傷,製造商及經銷商將不負相關責任。



三腳架需平均放置於平整地面上,否則有倒塌之危險。

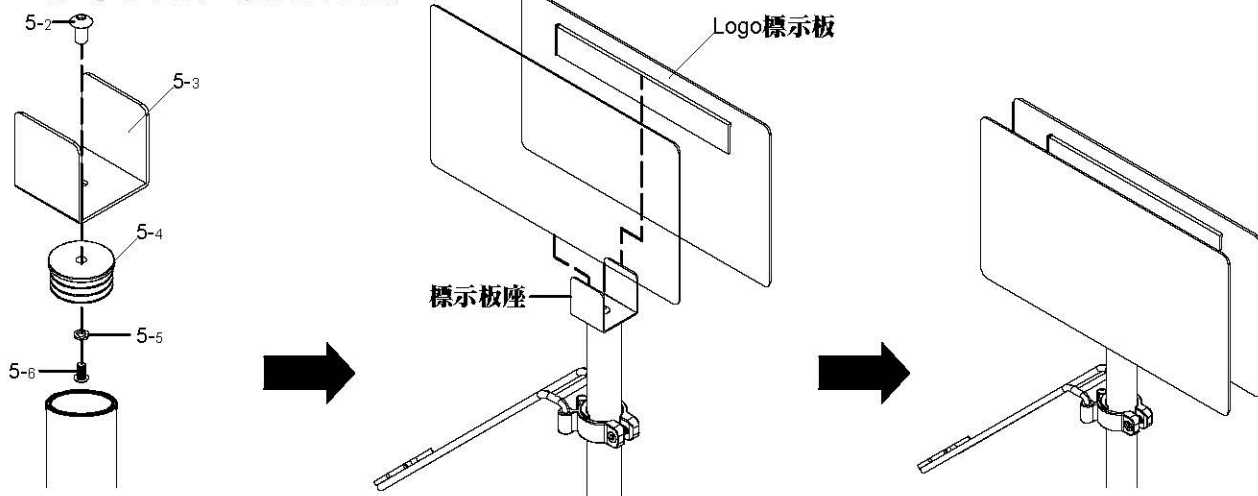


**最大負重:**  
輪組固定架2公斤  
輪組展示架40公斤

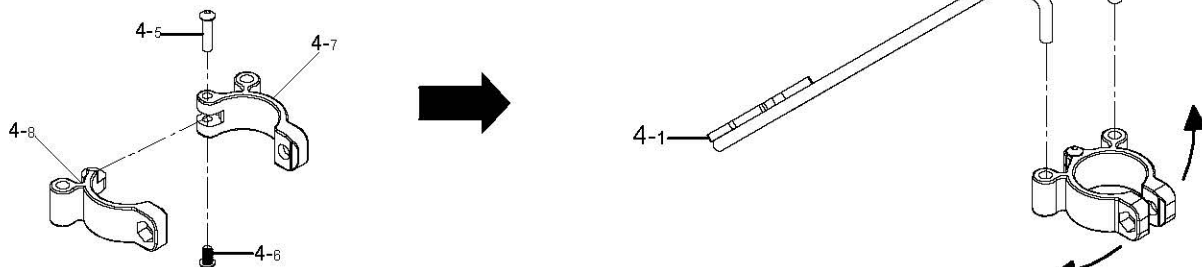


## 2 組裝步驟

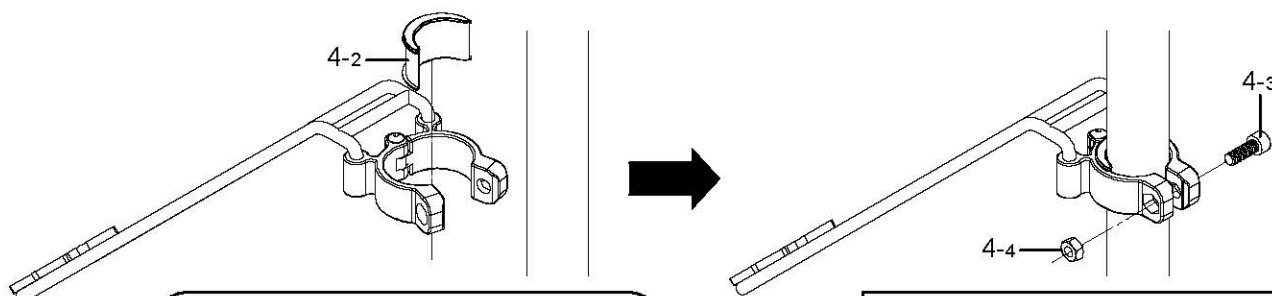
1. 將對鎖螺絲(母) (5-6)依序穿過彈簧墊片(5-5)、標示板固定座(5-4)、標示板座(5-3)鎖入對鎖螺絲(公) (5-2) (最大扭力值:5.0Nm)
2. 將Logo標示板(5-1)置於標示板座(5-3)上。



3. 將雙耳管束(公) (4-8)插入支撐架(母) (4-7)。
4. 將對鎖螺絲(母) (4-5)穿過雙耳管束(公) (4-8)與雙耳管束(母) (4-7)，與對鎖螺絲(公) (4-6)結合。
5. 調整雙耳管束(4-7&4-8)開啓角度，將固定臂(4-1)與雙耳管束結合。

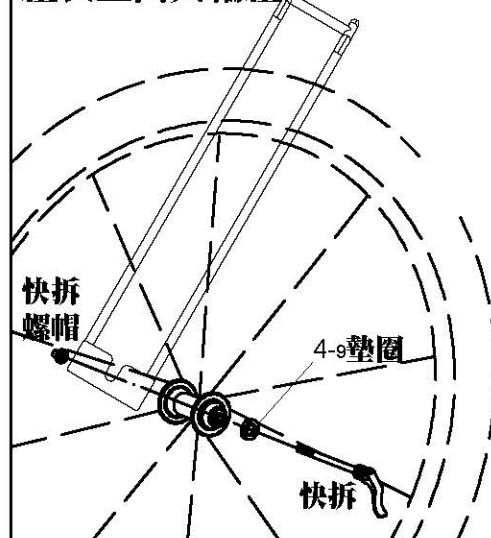


6. 若將輪組固定架組④固定於延長管①，請先將墊片(4-2)置於雙耳管束內側，再將雙耳管束固定於延長管①上。
7. 若將輪組固定架組④固定於主體管③，不需使用墊片(4-2)置於雙耳管束內側，即可將雙耳管束固定於主體管③上。
8. 調整輪組固定架組④於延長管①或主體管③上的位置。
9. 將六角螺絲(4-3)穿過雙耳管束鎖入防鬆螺帽(4-4) (最大扭力值:6.0Nm)。



須將固定臂(4-1)對準雙耳管束(4-7&4-8)插入後，才可將六角螺絲(4-3)及防鬆螺帽(4-4)鎖入雙耳管束，如順序顛倒可能導致固定臂無法與雙耳管束結合。

### 組裝墊圈與輪組



## 3 使用說明

1. 掛上輪組前，需先確認輪組展示架置於穩定的平面上與輪組固定架組④穩固的固定於延長管①或主體管③上。
2. 將輪組快拆取下。
3. 將快拆軸心依序穿過墊圈(4-9)、花鼓、固定臂(4-1)鎖入快拆螺帽。(請依照輪組規定將快拆固定)
4. 再次確認輪組已經固定於輪組固定架④上。