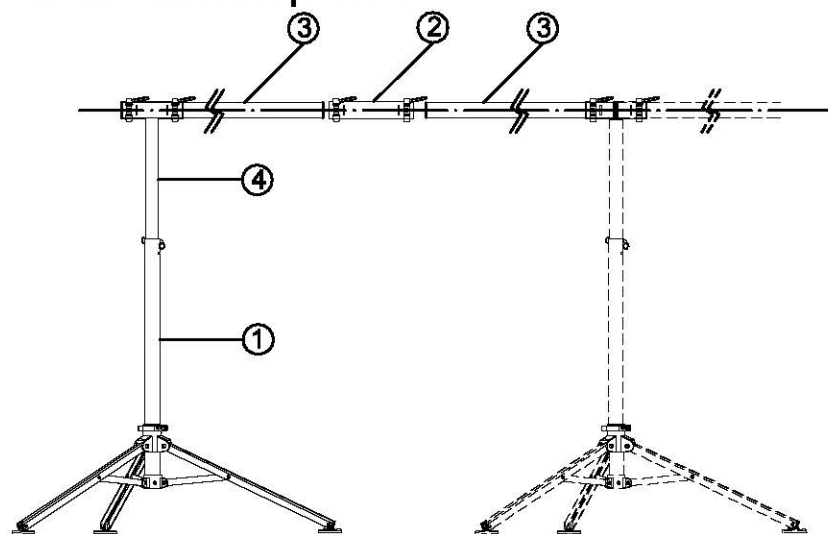


1 Parts description



NO.	PART	Q'TY
①	Tripod upright	1
②	Connector	1
③	Support tubes	2
④	T-shaped tube	1



For extending TB-SS10 only

2 Assembly

(Picture 1)

TB-SS10

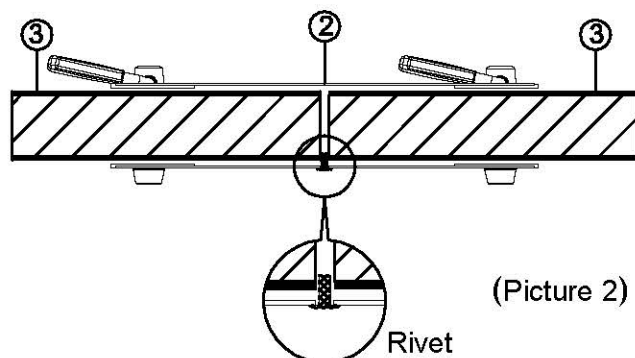
1. Set up the tripod upright ① steady. (see picture 1)
2. Set the T-shaped tube ④ (TB-SS10A) up to the same height as T-shaped tube (TB-SS10). (see picture 1)
3. Put the support tube ③ through the T-shaped tube ④ (TB-SS10A) and fix the support tube ③ by clamping the quick-release on the T-shaped tube ④. (see picture 1&3)
4. Put the support tube ③ through the connector ② and make sure the support tubes ③ have made contact with rivet of connector ②. (see picture 1&2)
5. Clamp the quick-release on the connector to fix the support tubes ③.
6. Release the quick-release on the T-shaped tube (TB-SS10) and move the support tube to the middle of the T-shaped tube. (see picture 3)
7. Put the support tube ③ through the T-shaped tube (TB-SS10) until it makes contact with the support tube (TB-SS10) and clamp the quick-release on the T-shaped tube (TB-SS10). (see picture 1&3)

3 Instruction

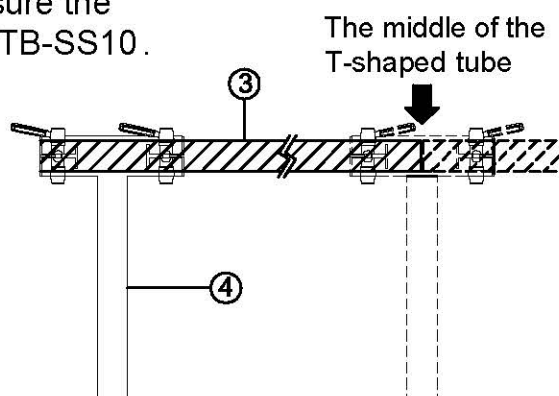
1. Make sure all the quick-releases are firmly tightened.
2. To keep the support tube balanced, make sure the T-shaped tube ④ (TB-SS10A) is as tall as TB-SS10.



Maximum load: 120kg (264lbs)

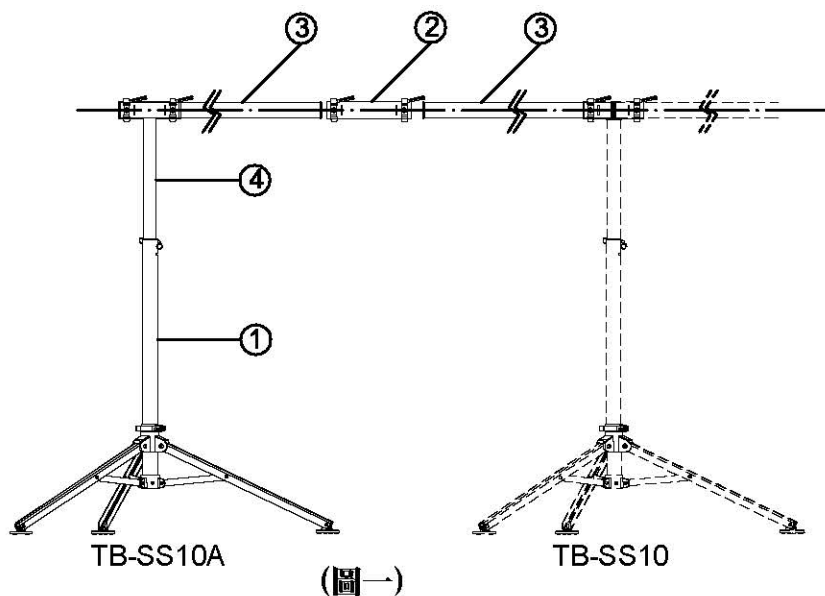


(Picture 2)



(Picture 3)

1 零件名稱及數量



編號	名稱	數量
①	三腳架	1
②	連結套管	1
③	支撐桿	2
④	T型管	1



請搭配 TB-SS10 使用

2 組裝步驟

1. 將三腳架①平穩站立。(如圖一所示)
2. 移動TB-SS10A的T型管④至所需高度，需與配合組裝之TB-SS10的T型管相同。(如圖一所示)
3. 將支撐桿③穿入TB-SS10A的T型管④，並將T型管④上的快拆鎖緊，以固定支撐桿③。(如圖一、圖三所示)
4. 將支撐桿③穿入連結套管②，並確認支撐桿③已接觸連結套管②內鉚釘。(如圖一、圖二所示)
5. 將連結套管②上的快拆鎖緊以固定支撐桿③。
6. 將TB-SS10的T型管快拆放鬆並調整支撐桿至T型管④中間位置。(如圖三所示)
7. 將支撐桿③穿入TB-SS10的T型管，與TB-SS10的支撐桿相接觸，並將TB-SS10的T型管上的快拆鎖緊以固定支撐桿。(如圖一、圖三所示)

3 使用說明

1. 使用前請確認所有快拆都已經鎖緊。
2. 確認TB-SS10A的T型管④水平高度與配合組裝之TB-SS10的T型管高度相同，以保持支撐桿③能平衡不傾斜。



最大承受重量為120公斤 (264磅)

